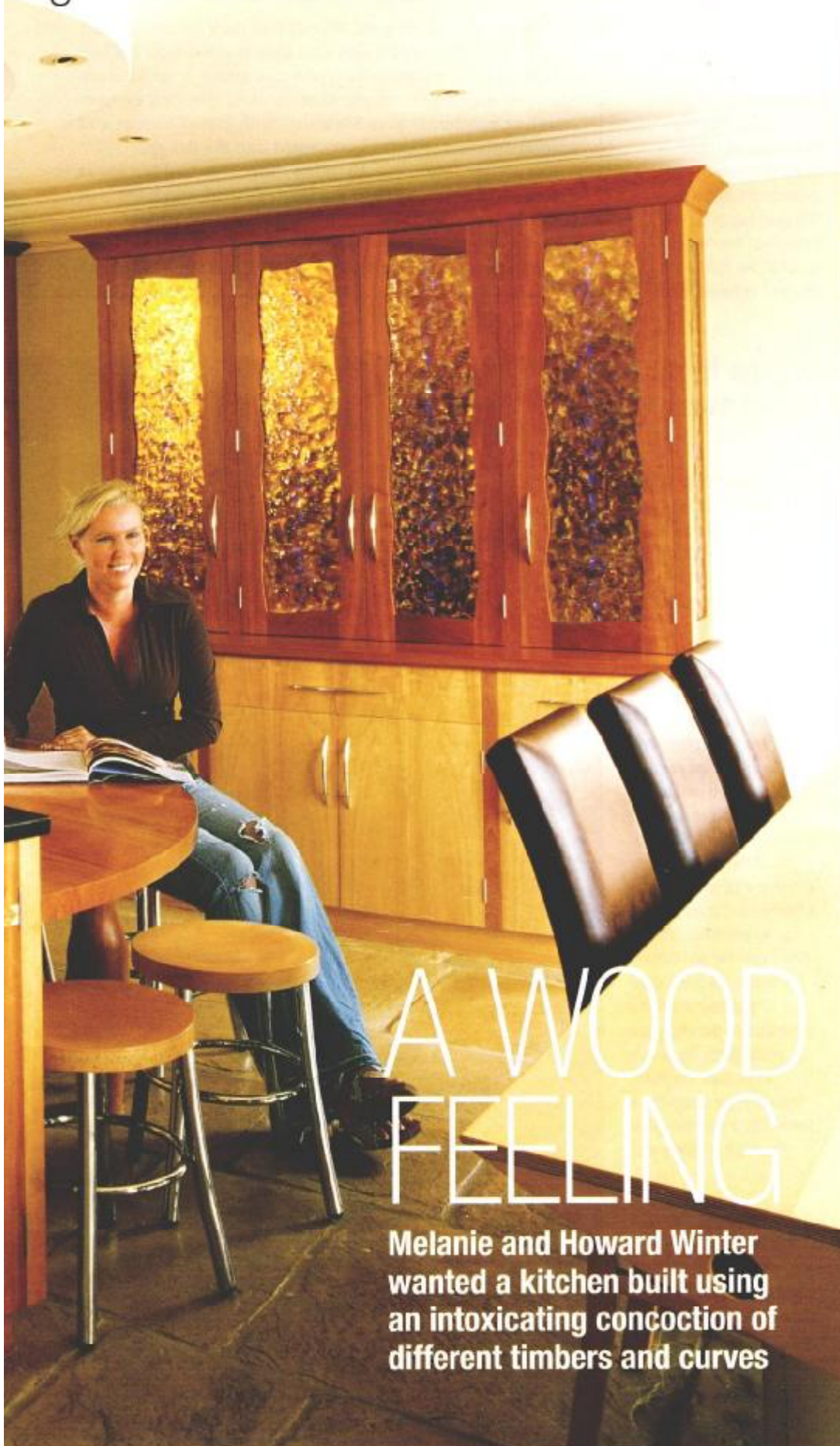


👉 We practically live in here now, so I can't think of a



Bill Davies Penny's Mill — billdavies@pennysmill.com

greater testament to its success



A WOOD FEELING

Melanie and Howard Winter wanted a kitchen built using an intoxicating concoction of different timbers and curves

KITCHEN FILE

Design

- Bill Davies at Penny's Mill, Nunney, Frome, Somerset: BA11 4NP (01373 836210) www.pennysmill.com

Worksurfaces

- **Star Galaxy granite**, approx £517 per sq m, Chiltern Marble
- **Stainless steel**, approx £263 per sq m, Freshlook Engineering

Flooring

- **Classical York stone**, approx £51 per sq m, Classical Flagstones

Appliances

- **Range cooker**, for similar try EVGRC485-4GQ, £9,499, Viking
- **Combination microwave**, for similar try H4C60BMSS, £1,586
- **G2870SCVi fully integrated dishwasher**, £1,220 Both Miele
- **Island extractor**, for similar try AH402, approx £2,300, Gaggenau
- **2 x American-style fridge freezers in stainless steel**, for similar try Reflection 026FN BxM, approx £3,000 each, Amana

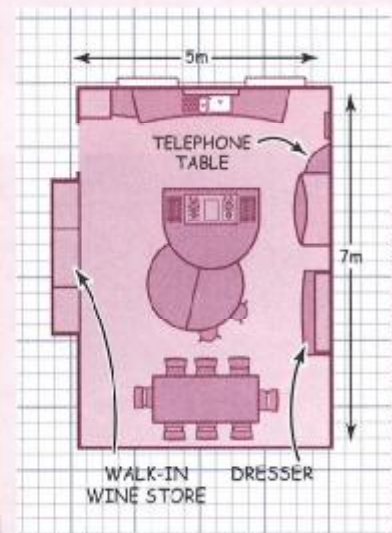
Sink and tap

- **One-and-a-half-bowl undermounted sink**, for similar try KBX 160 34-16, £300
- **Single-lever tap with rinse**, for similar try Swiss Pro, approx £300 Both Franke

PRICE GUIDE

Approx £40,000 Cabinetry and installation only

KITCHEN LAYOUT



FEATURE ANNA TOBIN PHOTOGRAPHY DAVID STILL



◀ The two curved island units provide a huge amount of storage. Contrasting timbers have been used to make each drum – one in pale aspen, the other in darker cherry. A decorative strip has been inlaid into much of the cabinetry using three more contrasting woods. 'We used lots of curves throughout the design to soften the look of the kitchen,' explains Melanie

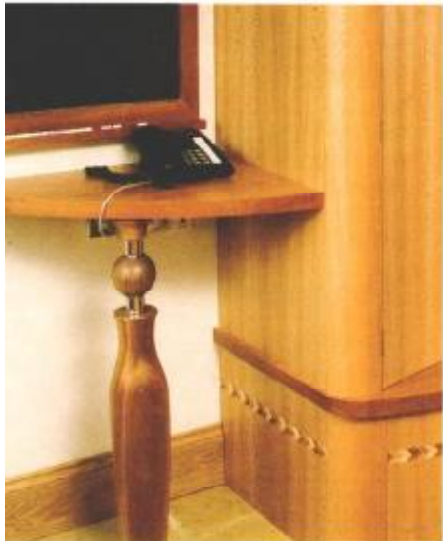
The Winters' story

Melanie and Howard Winter had their house built for them three years ago, and they wanted their kitchen to have a similar bespoke feel about it, so Melanie shopped around for inspiration. 'I liked the look of free-standing furniture,' says Melanie, 'with lots of curves and several different woods incorporated into the design.'

The couple found exactly what they were looking for at Penny's Mill. 'I saw some of Bill Davies's work and knew that he could create what I was after and for a reasonable price.'

As well as wanting the kitchen to have a timeless quality, Melanie also asked that it should look uncluttered, so plenty

‘We’ve got three daughters, so there is always lots of stuff to put away’



◀ Bill included a handy communication corner with a phone stand and cherrywood-framed blackboard. The turned table leg is made from walnut

The larger-than-life kitchen units are made from a combination of aspen, American cherry and London plane veneers. Computer-aided design was used to ensure total accuracy in the construction of the room's curved elements. Had any part been a fraction out, it would have caused problems with the doors opening and closing. The iridescent glass in the glazed cabinet is a handmade dichroic glass which glints like jewels in the sun. The Viking range in the island has a bank of four stainless-steel drawers on either side



◀ A wide cutlery drawer has been given a compartmentalised interior so that every knife, fork and spoon has a home. The bow handles are made from polished chrome

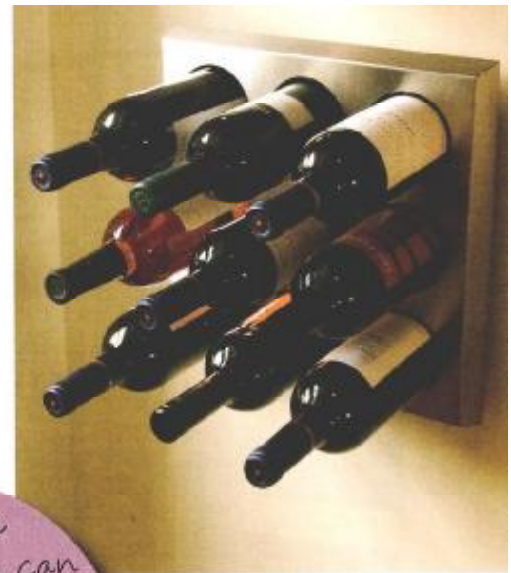


of storage was essential. 'We're a busy household and we've got three daughters, Katie, nine, Olivia, eight, and Isabella, four, so there's always lots of stuff to put away,' she says.

Bill's solution was to create an island based on two circles that interlock at three different levels, providing a generous amount of prep and cooking space, an eating area and copious storage. 'We practically live in the kitchen now,' says Melanie. 'I can't think of a greater testament to its success.'

OUR FAVOURITE DESIGN ELEMENT 'We love the big larder cupboard. It allows you to see everything that's in it'

For an elegant, ultra-chic design solution to storing some of their wine, Melanie and Howard discovered this wall-mounted rack. For similar try Wineware, who stock a Danish design by Jesper Thomsen made with brushed stainless steel



If you have the space, you can be adventurous with your island, giving it layers with zones for different functions





Two large sash windows flanking the sink area ensure the kitchen has plenty of natural light. Underfloor heating is installed under the Classical York stone tiles.

‘I liked the look of freestanding furniture, with lots of curves and several different woods incorporated into the design.’



Melanie got her inspiration for the design of the stainless-steel surround that creates a feature of the walk-in wine storage cabinet after dining at a swanky London hotel. Two huge fridge freezers flank the wine store, creating a mouthwatering food and drink zone.

The mirrored wine storage room also features pull-out racks for other types of beverage.



WHERE TO BUY Amana 01737 231000 Chiltern
 Marble 020 8381 4492 Classical Flagstones 0117
 937 1960 Franke 0161 436 6280 Freshlook
 Engineering 01373 452828 Gaggenau 0870 840
 2003 Miele 0845 330 3866 Viking 01787 224921
 Wineware 01903 723557